



TANZANIAN CHILDREN'S FUND
— ANNUAL REPORT 2016 —



A YEAR OF REFLECTION

As the clock struck midnight ending 2016, we were surrounded by 60 of our teenage kids and feeling that all was right with the world.

Looking around at these wholesome, happy kids on their way to doing great things, we asked ourselves: Are we succeeding? Are we giving them the brighter futures we promised?

When reaching major milestones like sending 13 of our children off to start their post-secondary educations, we know we are giving them futures that otherwise would have been impossible. But brighter futures aren't built on individual accolades and acceptance letters alone.

From the beginning we knew that a brighter future for our kids would be impossible if we weren't able to improve and lift lives in the community that surrounds them. Over the past year, we have made major strides in confronting the outcomes that result from extreme systematic poverty, strides that we could not have made without your support.

As you continue to learn about the progress we made in 2016, please know that it was you who empowered us to change lives and improve outcomes in a community of 10,000.

India Howell
Co-Founder
Executive Director

Peter Leon Mmassy
Co-Founder
Tanzanian Managing Director



TABLE OF CONTENTS

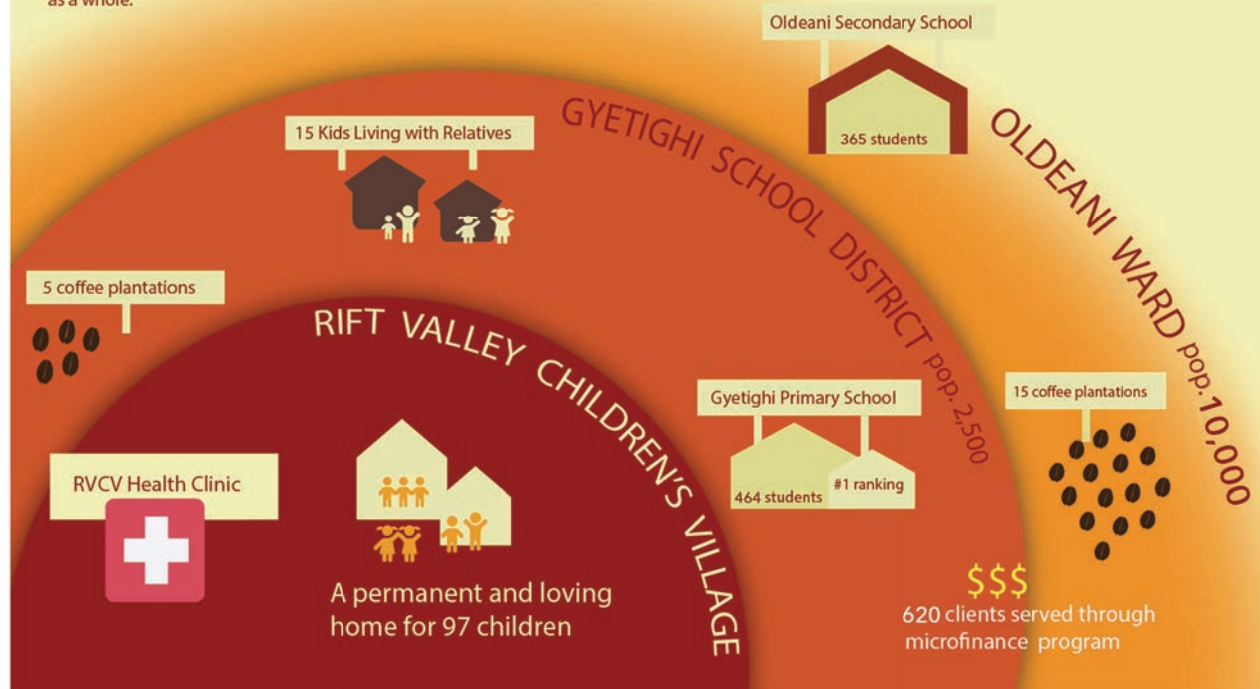
A Year of Reflection	1
Circles of Impact	3
Lifting Lives	4
Building Futures	5
Lasting Change	6
Our Impact	7
Rift Valley Children's Village	9
Education	13
Health	19
Microfinance	23
Financials	31
Asante Sana	33

CIRCLES OF IMPACT

The 97 children living at RVCV are at the heart of our mission. However, we recognize that the most effective way to improve outcomes for all marginalized children is to strengthen the community as a whole.

This is why TCF and RVCV have taken a multi-pronged approach to combating poverty through the following community-based programs:

- Gyetighi & Oldeani School Partnerships
- Free Medical Care
- Microfinance Trainings and Loans
- Kids Living with Relatives



LIFTING LIVES

When you watch Flavi (5) race his toy tractor on the library steps, it is hard not to imagine how life could have been for this sweet and rambunctious little boy.

After the sudden loss of both his parents at just 3 years old, Flavi's world was turned upside-down and his future became uncertain. With a loving grandmother too elderly to give him the care he needs, we welcomed Flavi into our forever family and supported him through a tragedy no little boy should face alone.

From when we celebrate his first day of kindergarten, to when we congratulate him on his college graduation, Flavi will reach each milestone with the support of a loving family.

For now, Flavi will get to continue focusing on being a 5 year old and enjoying a childhood that was almost lost.





Like many other young girls living in the developing world, Sinora grew up in a system that always seemed to be working against her.

At just 13 years old, Sinora is the main provider for her three siblings and often has to work long hours on top of her schooling in order to help make ends meet for her family. Despite the demands at home, she is a diligent student, often found studying during her rare moments of freedom.

Every year, as part of our mission to build brighter futures, TCF provides scholarships for a number of driven students. Along with covering their secondary school expenses, we provide them with a safe place to live and study at our Scholarship Hostel, located just a short walk from Oldeani Secondary School.

When it came time to select this year's scholars, we knew it would be impossible to find anyone more deserving than Sinora.

When asked why she was excited to be selected for a scholarship, Sinora replied "because I will finally have time to learn and be able to do what's right for me."

BUILDING FUTURES



LASTING CHANGE

Mery Emanuel joined our microfinance program in December of 2012, when we provided her with a loan to build a small shop in Oldeani town. Before receiving our loan, Mery lived in a small hut with her three children and struggled to get by. Because she didn't have her own source of income, Mery often had to wait until her husband returned from a week of working to feed her family.

Just 5 years later, Mery's shop has become one of the most successful in Oldeani town, participating in our business training courses and benefiting from access to increasingly larger loans along the way. This past year, she chose to expand her skill-base by joining our handicrafts program.

Mery's increased income has allowed her to independently feed her family, build a safer home, and send her first daughter to college, providing her family with a future they never imagined possible. For Mery, our loan didn't just help put food on the table. Our loan allowed her to free herself and her family from the cycle of poverty.

OUR IMPACT IN 2016



126
children
nurtured by
RVCV per day



829
students
educated through
our partner
schools



4,396
patients
treated at our
Rural Community
Health Clinic



3,720
family members
supported by
our microfinance
program



HERE IS HOW WE DID IT...

RIFT VALLEY
CHILDREN'S
VILLAGE



At the Rift Valley Children's Village (RVCV), we are giving children a second chance at childhood by offering them more than just a roof over their heads and a bed to sleep in. We provide a loving home and a forever family to orphaned and at-risk children in the Karatu region of Northern Tanzania. It is our belief that every child should grow up knowing that someone believes in them. When children are loved, cared for, and encouraged to follow their dreams and pursue their talents, they are capable of anything. Raised to be thoughtful, ambitious and passionate, it is our hope that when backed by the unwavering support of their family, our children will become Tanzania's next generation of leaders.

In 2016, we became a family with 97 children when we welcomed Flavi (5), Nuru (10) and Isaya (13). Making our family feel even more complete, we have relished watching these young boys flourish in their new home and are already seeing the positive behavioral changes that result from living in a safe and loving home. With each sporting bigger smiles and walking with their heads held a bit higher, their transformations are a true testament to the home and family we have created here at RVCV.





Our kids continued to reach new heights in 2016 with 10 of our children graduating primary school and 11 graduating secondary school. All 10 of our primary school graduates will be attending Oldeani Secondary School in the new year. Our secondary school graduates began preparing their college applications and planning their next big steps towards adulthood. Additionally, in 2016 we sent 13 children on to their higher educations, with 10 now enrolled in college or vocational schools, and 3 that are on track to attend university. With another 9 of our Student Teacher Program graduates earning their college or university degrees in 2016, **TCF has supported 74 students through their higher education!**

TCF and the kids of RVCV enjoyed a little time in the spotlight when CBS's 60 Minutes ran a segment titled 'The Children's Village'. The 13-minute piece focused on how our RVCV family came to be and provided an overview of TCF's community programs.

Added
3


more children
to the RVCV family



1 Shipping container
full of supplies
arrived at RVCV

RVCV appeared on
CBS's
60
MINUTES



Welcomed
55
Volunteers



9 Student teachers graduated
from higher education
10 Standard 7 Graduates
11 Form 4 Graduates

EDUCATION

GYETIGHI

PRIMARY SCHOOL



Gyteighi Primary School (GPS) continued to prove itself as a model school in Tanzania, ranking in the top 4% of all schools, both public and private, in the country. In 2016, GPS took over as the number 1 school in the Karatu district, with 98% of the Standard 7 class passing the National Exam.

We made investing in and catering to all students a focal point in 2016, with efforts that included professional development seminars that to equip GPS teachers with skills and techniques that will allow them to meet the needs of a diverse range of learners. These efforts resulted in record high Standard 4 National Exam results, with more than half of the class receiving an A average and only 2 students scoring below a C.

Our investment in GPS's English for Speakers of Other Languages curriculum has proved to be successful. 84% of Standard 7 class received an A or B grade on the English portion of their National Exam, showing that their preparedness for secondary school, which is taught primarily in English throughout Tanzania. To ensure all students in our area were ready for the language shift that comes with graduating primary school, TCF continued its Pre-Form 1 Program, inviting all Standard 7 graduates from both GPS and neighboring Oldeani Primary School to take part in a preparatory course that focused on increasing students' confidence in their English-language skills. By the end of the 7-week session, we saw students more than double their English scores, creating a stronger foundation for student success at the secondary level.



EDUCATION

OLDEANI

SECONDARY SCHOOL

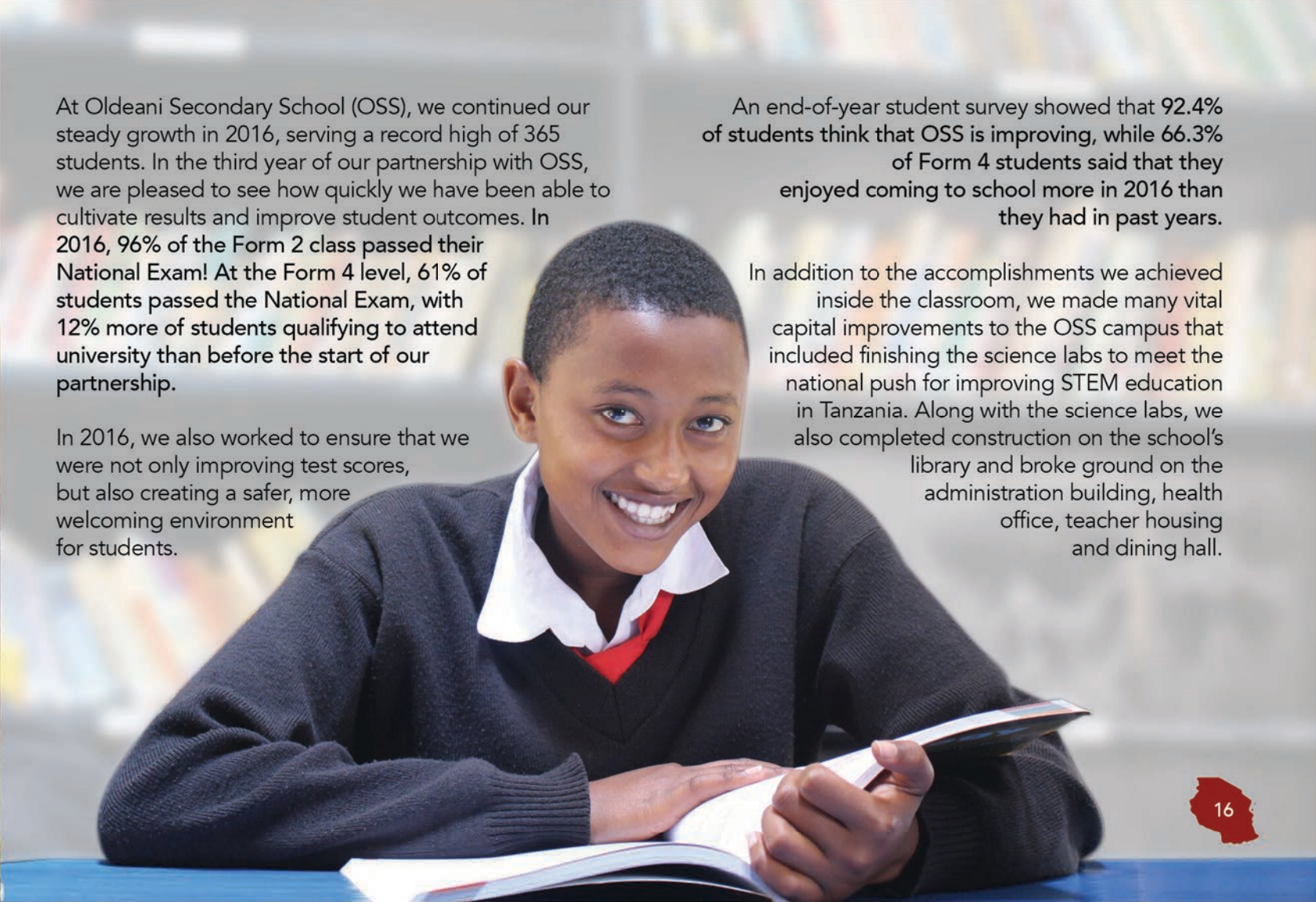


At Oldeani Secondary School (OSS), we continued our steady growth in 2016, serving a record high of 365 students. In the third year of our partnership with OSS, we are pleased to see how quickly we have been able to cultivate results and improve student outcomes. In 2016, 96% of the Form 2 class passed their National Exam! At the Form 4 level, 61% of students passed the National Exam, with 12% more of students qualifying to attend university than before the start of our partnership.

In 2016, we also worked to ensure that we were not only improving test scores, but also creating a safer, more welcoming environment for students.

An end-of-year student survey showed that 92.4% of students think that OSS is improving, while 66.3% of Form 4 students said that they enjoyed coming to school more in 2016 than they had in past years.

In addition to the accomplishments we achieved inside the classroom, we made many vital capital improvements to the OSS campus that included finishing the science labs to meet the national push for improving STEM education in Tanzania. Along with the science labs, we also completed construction on the school's library and broke ground on the administration building, health office, teacher housing and dining hall.



GYETIGHI PRIMARY SCHOOL

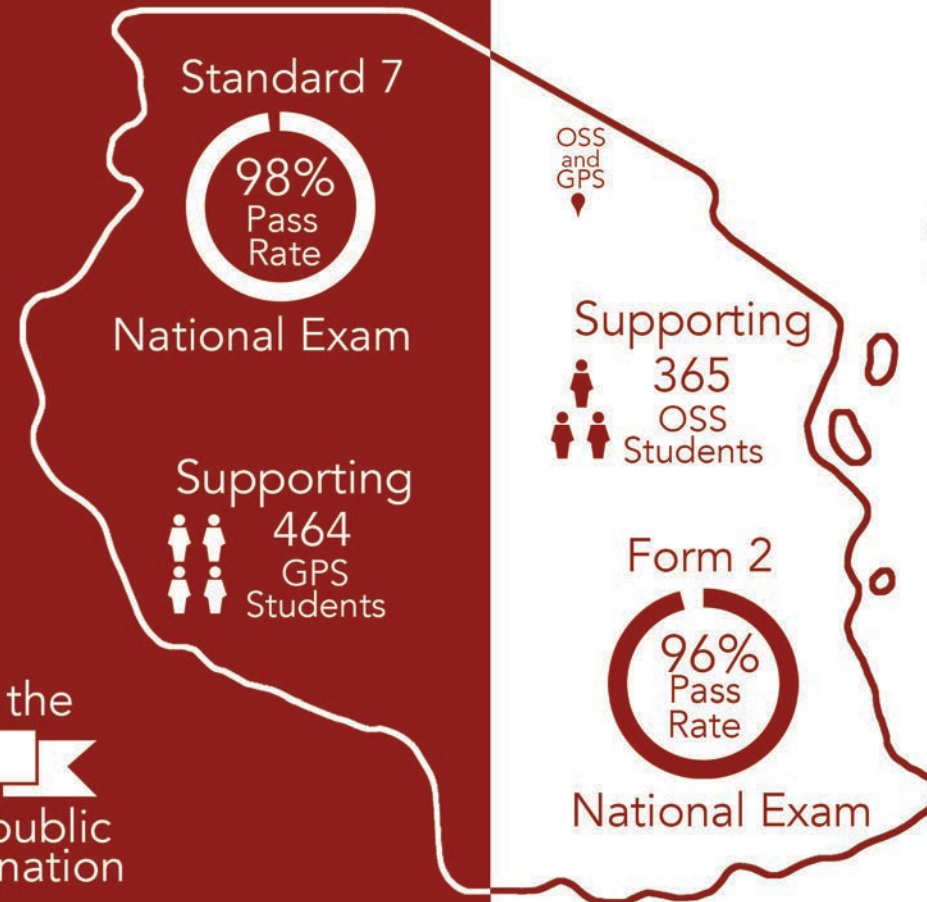
+2 Rainwater Harvesting Tanks

Record high Standard 4 National Exam results, where 56% of the class received an A grade and only 2 students scored below a C (a 36% jump from 2015).

Student to Teacher Ratio

56:1 at start of partnership
20:1 Now

GPS ranks in the **Top 4%** of private and public schools in the nation



Standard 7



National Exam

Supporting

464 GPS Students

OSS and GPS

Supporting

365 OSS Students

Form 2



National Exam

Student to Teacher Ratio

42:1 at start of partnership
19:1 Now

12% Increase

in students qualifying for university

OLDEANI SECONDARY SCHOOL



Partnered with
TabLab
bringing tablet technology to OSS classrooms

We finished construction of library, broke ground on the admin building, teacher housing, and 1 dining hall.

MEDICAL CARE



With quality and accessible healthcare being almost non-existent in our area of Tanzania, TCF employs a full-time registered nurse to run RVCV's Rural Community Health Clinic to provide free medical care to our entire surrounding community. Our nurse also acts as the school nurse at both Gyetighi Primary and Oldeani Secondary Schools, conducting robust annual health screenings for each student as well as responsive medical care. Efforts that improve the present and future health of our students.

2016 was a banner year for our Rural Community Health Clinic under the leadership of Gretchen Kehde, our new on-site Registered Nurse. In 2016, Gretchen **treated over 4,300 patients, averaging 14 patients per day**. Treating patients of all ages and ailments, Gretchen helped facilitate 4 special surgeries for community members in need of life-saving treatment. Additionally, Gretchen provided the over 820 students in our partner schools with consistent medical care over the course of 2016. **Her impact on the health of students at Oldeani Secondary School inspired us to include an examination room and medical office in the construction of our administration building.**



Given the high-level of care provided by Gretchen and our increased focus on providing sustainable, routine care to patients in our local community, we concluded the bi-monthly mobile clinics held as part of our partnership with FAME (Foundation for African Medicine and Education). TCF and FAME continued working together in 2016 to treat patients who required more extensive care and partnered to ensure that as many community patients as possible benefited from visiting medical specialists. In 2016, we hosted teams of optometrists, neurologists and dentists, making basic and necessary care accessible to our community.



4,396
Patients
Treated



Began construction
on nurses office
at OSS



Completed
health checks
for **ALL**

OSS and GPS students



57

Patients
Seen
by

Neurology Team



ECONOMIC EMPOWERMENT MICROFINANCE

Arriving in a community where for many generations seasonal coffee picking was the only employment opportunity available, we quickly recognized the need for more diversified, sustainable sources of income. In 2008, we launched our Microfinance Program with the aim of lowering unemployment, raising incomes, and helping families in our community break the cycle of poverty. In 2016, we had 620 active microfinance clients earning incomes more than 3 times the average annual income of the area.



With 66% of our clients being women, in 2016, we continued to invest in our Handicrafts Initiative, aimed at arming women in our community with new skills and techniques, allowing them to create more contemporary products that are unique to the existing marketplace. With the assistance of our Handicrafts Coordinator, the 13 women who participated in this initiative felt the benefits of our investment when their products began selling in 2 additional lodges, allowing the Rift Valley Women's Group's sales to exceed \$8,400 in 2016.

We continued to support our clients in their various ventures by providing 19 training sessions over the course of 2016. These trainings gave our clients the support and guidance to not only reach success in their small businesses, but allowed them to continue to grow and develop as entrepreneurs. It's not just our clients that benefit from our Microfinance Program, with each of our clients supporting an average of 6 family members, 3,720 community members benefited from more stable and consistent sources of income.



620 clients supporting **3,720** family members



Average income of clients | \$1000
versus
Average income of area | \$300





“What we’re after is transforming lives. No one person can do that – it’s through a collective effort. It’s all of us working together that transforms not only one life, but many lives, and ultimately a community.”

- India Howell, Founder & Executive Director

A LETTER FROM our TREASURER

To our supporters and friends,

As the Treasurer of TCF, I want to say to all our supporters and friends -- THANK YOU!!! As a direct result of your generosity, TCF is stronger financially than ever. As you know, our financial well-being translates directly into our ability to support our mission in Tanzania and to provide a brighter future for the children under TCF's care.

In terms of the numbers, TCF received slightly in excess of \$2 million in contributions and other revenues in fiscal year 2016, principally from individual donations and family foundations. This is an historic high for TCF and reflects the extraordinary support and commitment by all members of the TCF family. These funds have allowed TCF to continue its many impactful programs at the Children's Village and in the neighboring community. Among the many milestones achieved in 2016, I would highlight:

- Completed construction on the library at Oldeani Secondary School and broke ground on the dining hall, teacher housing and administration building;
- Hired a School Manager at Oldeani Secondary to ensure the needs of students are met and to deliver the best secondary education possible to our community;
- Added a Teen Counselor to our team of Social Workers at the Childrens' Village to further support our teens and young adults through adolescence; and
- Sent a record number of children on to higher education, including 3 who are on track to attend university and 10 to college or vocational school.

On the expenditure side, our total expenditures in the U.S. and Tanzania for fiscal year 2016 were approximately \$1.6 million. Of that amount, 83% was spent directly on programs in Tanzania with the remaining 17% allocated to general overhead (including our valuable U.S. operations team).



While we will continue to invest in the infrastructure needed to carry out our mission, the Board's focus has been and will continue to be on using your donations to make a direct and lasting impact on the lives of marginalized children in Tanzania.

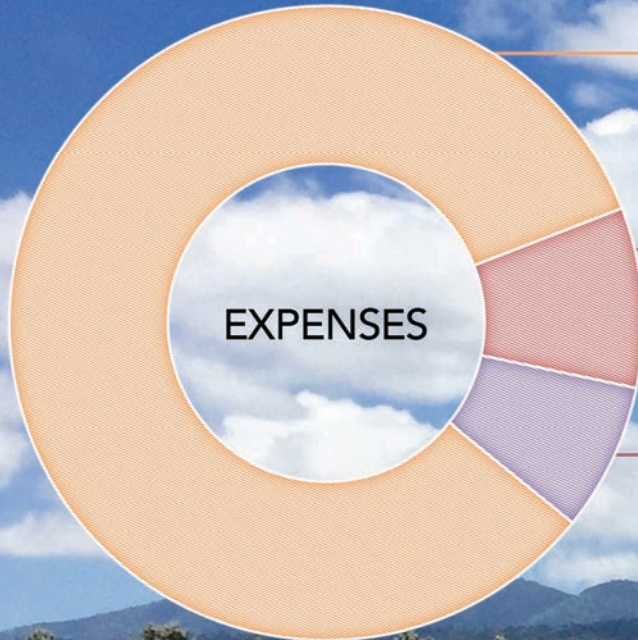
Our Board of Directors is charged with taking a long-term perspective with respect to the funds under our management. Our approach is two-fold: to ensure that existing programs are properly funded and managed, and to set aside appropriate amounts in TCF's long-term investment accounts, which are intended to provide security and continuity in uncertain times.

In terms of TCF's long-term investment accounts, we entered fiscal year 2016 in strong financial condition, with approximately \$1,625,000 in our investment accounts. By the end of 2016, the amount in these accounts had increased to approximately \$2,328,000. As of June 30, 2017, the total amounts in our investment accounts were approximately \$3,063,000. Again, these positive results are due to your generosity and consistent support for TCF and its mission.

The members of the Board and Directors of TCF view ourselves as stewards of these funds, and we are committed to using these monies to ensure the long-term support of the children at the Children's Village and in the Karatu region. On behalf of the Board of Directors and the entire TCF Community, thank you for making this possible.

R Todd Cronan
Treasurer

2016
FINANCIALS



PROGRAMS (83%)
\$1,340,527

DEVELOPMENT (9%)
\$147,999

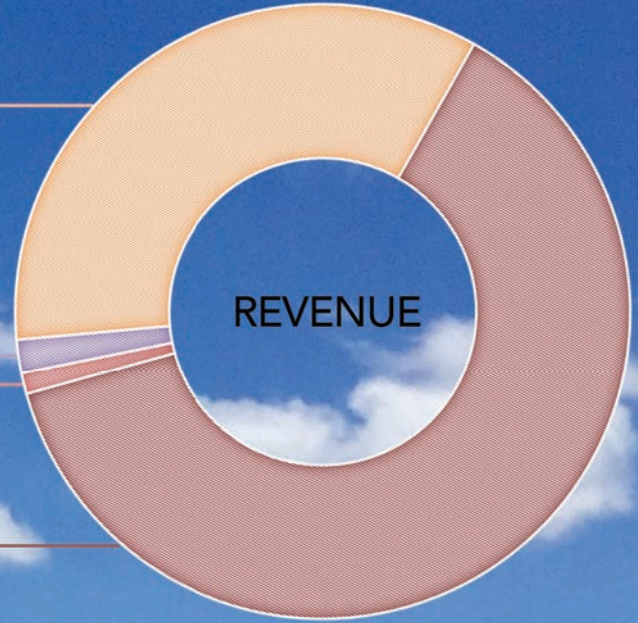
MANAGEMENT (8%)
\$120,995

FOUNDATIONS
& CORPORATIONS (35%)
\$729,168

OTHER (2%)
\$37,170

INVESTMENT INCOME (1%)
\$23,480

INDIVIDUALS (62%)
\$1,315,537



THANK YOU TO OUR BOARD & TEAM

They say it takes a village to raise a child, so imagine what it takes to raise 97! We are forever grateful to those who have joined us in loving and caring for the children who call RVCV home. We continue to be humbled and inspired by the dedicated teams on the ground in Tanzania and the US who work hand-in-hand to ensure we make a positive and lasting impact both at home and through our community programs. To our loving house mamas, social workers, staff members and volunteers, we thank you for your time and sacrifices in helping lead a generation toward brighter futures.

TCF's Board of Directors is an essential element behind TCF's success, and we'd like to thank them for their service:
(From left to right) Kirsten Heineman; Sallie Bear; India Howell; Peter Leon Mmassey; Linda Hayes; Todd Cronan; Peggy Bacon; Rob Rosser; Jody Drake; Eleanor Doar; Will Gray. Not pictured: Jim Schubauer.



THANK YOU TO OUR PARTNERS

